



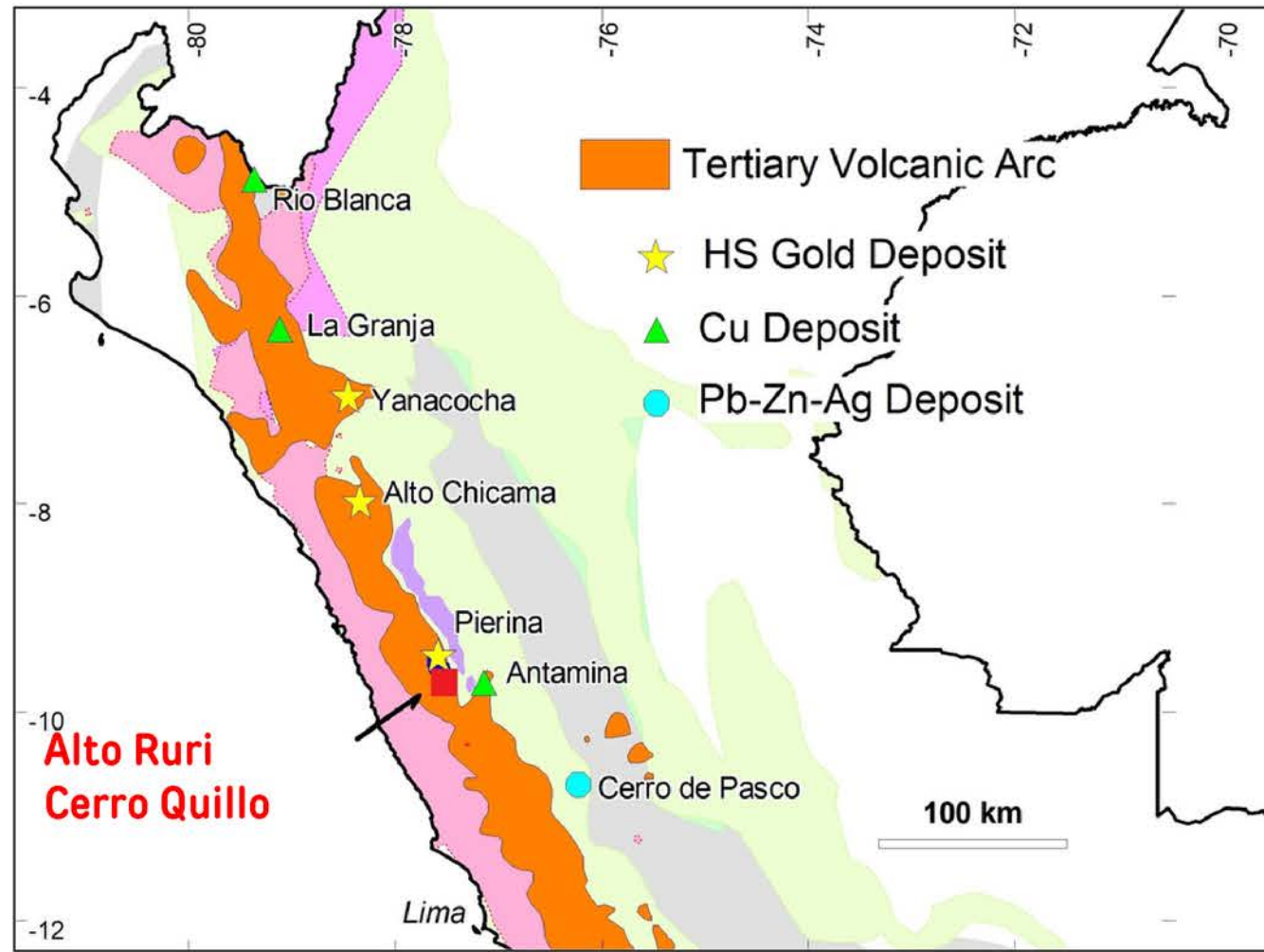
**FORTE**  
MINERALS CORP.

CSE: CUAU | OTCQB: FOMNF | Frankfurt: 20A

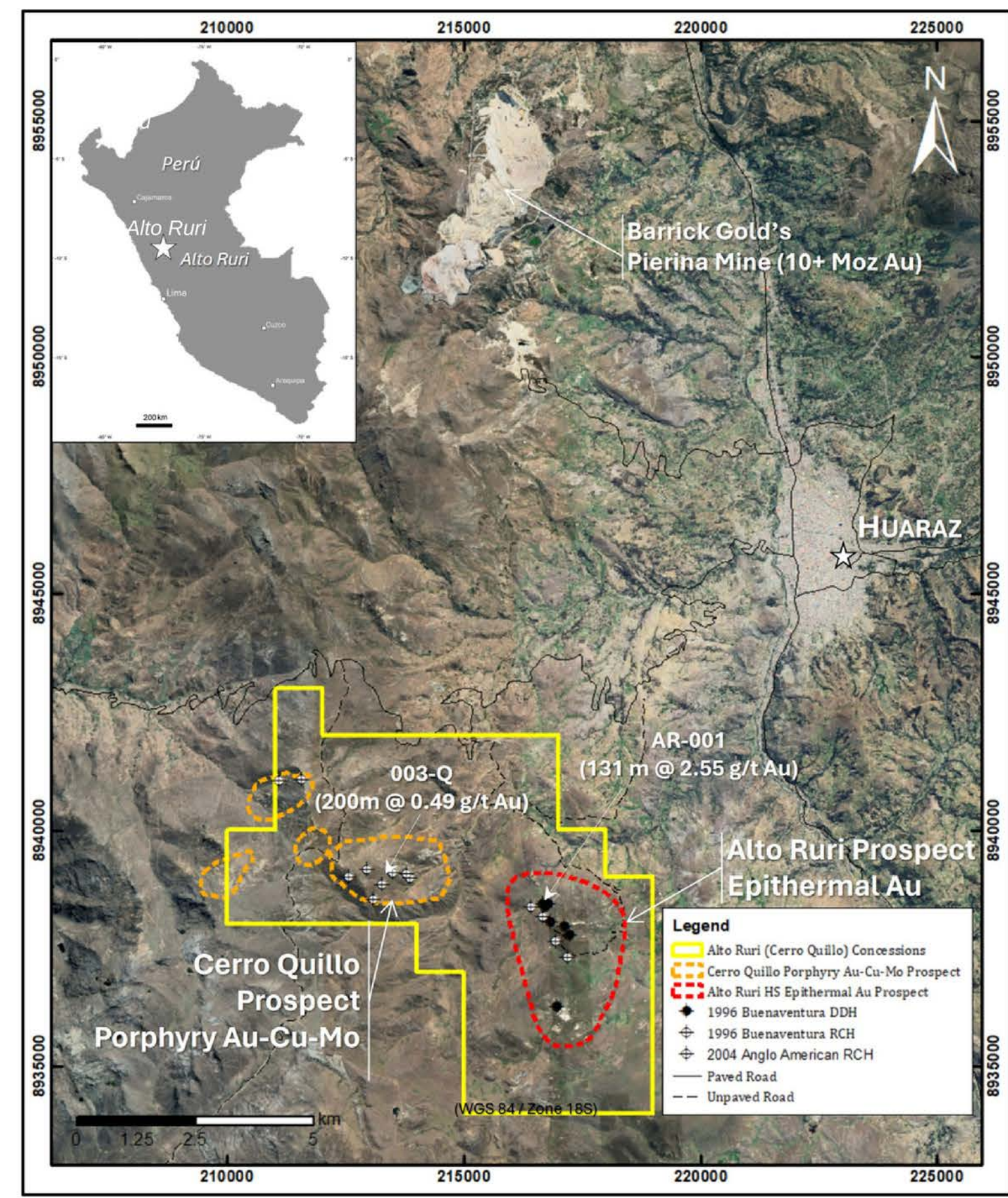
# Alto Ruri Project

## High Suphidation Gold

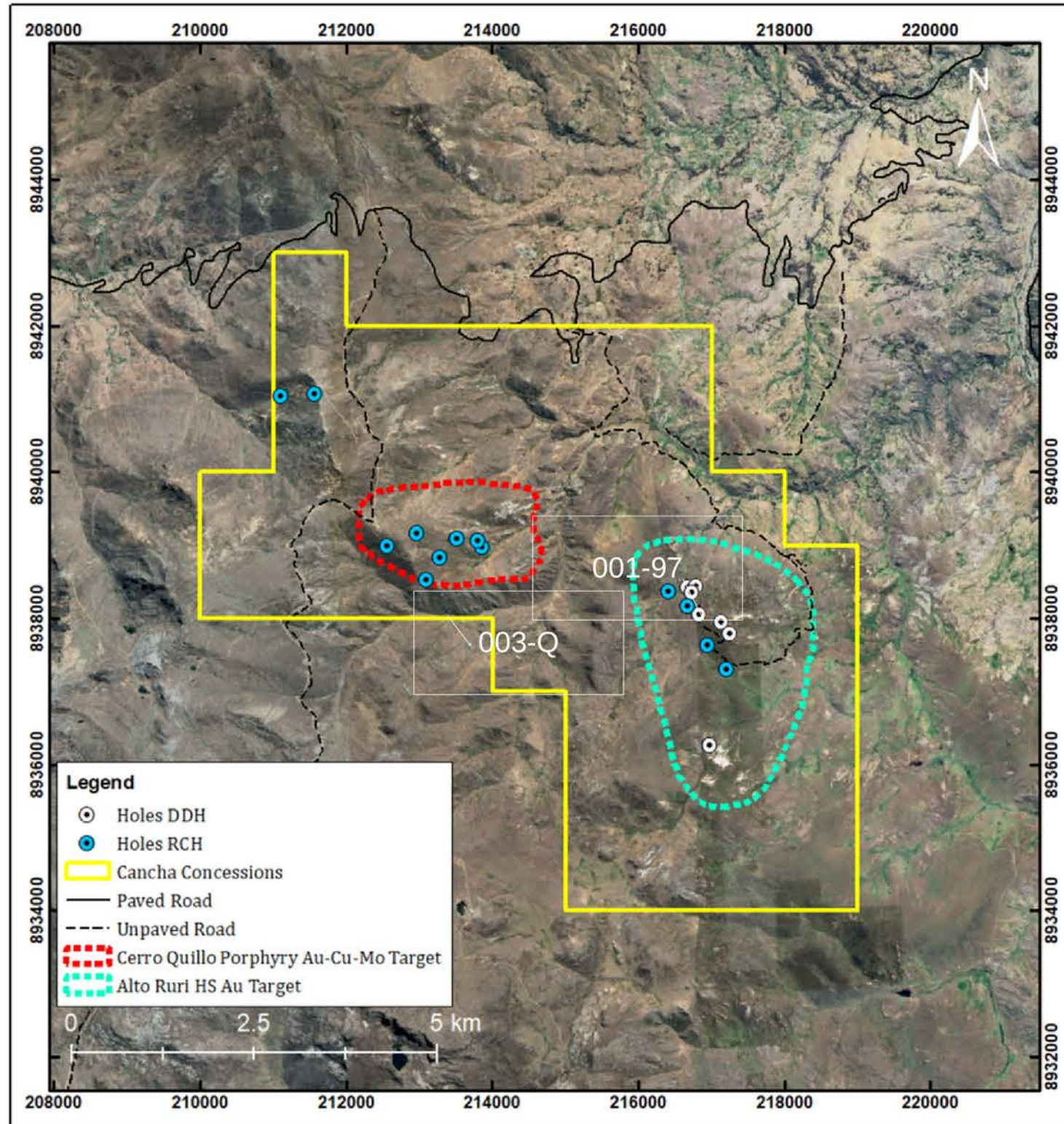
# Alto Ruri-Cerro Quillo Properties



- 4700 ha - 15 km south of Barrick's Pierina Gold Mine.
- 100% ownership subject to a 1% NSR Royalty.
- Comprised of 2 prospects:
  - Alto Ruri –High Sulphidation Epithermal Au
  - Cerro Quillo – Porphyry Au-Cu-Mo
- Road accessible from the city of Huaraz
- Excellent Endowment within the Northern Peru Porphyry and HS Miocene Belt



# Alto Ruri – Cerro Quillo Projects - Historical Drilling



- **Alto Ruri – Drilled by Buenaventura 1997**

- 12 shallow holes for a total of 2254.5 m.
- 001-97 returned best results of 131 m of 2.55 g/t Au.
- Including 54 m of 5.39 g/t Au.

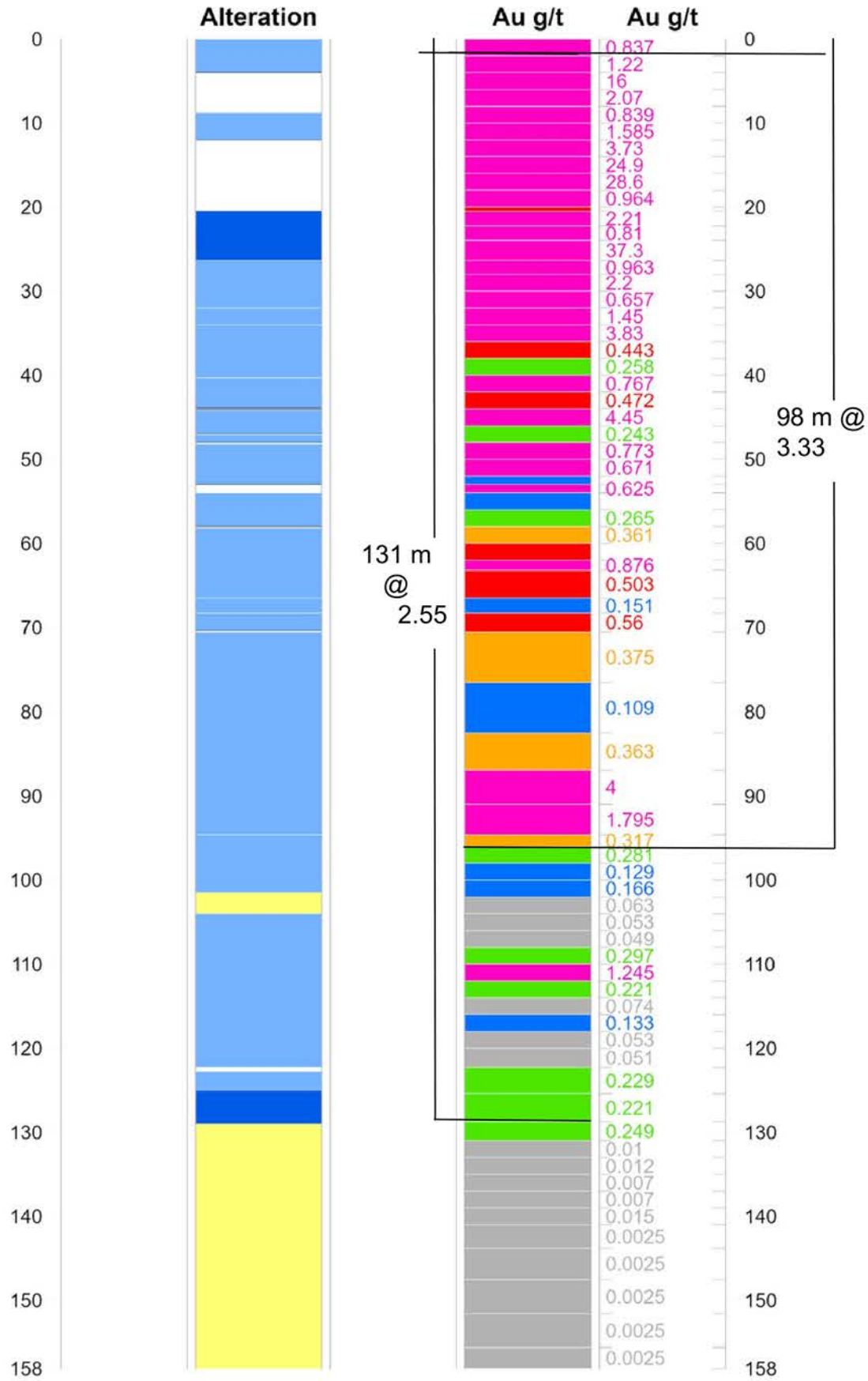
- **Cerro Quillo – Drilled by Anglo American 2004**

- 9 holes for a total of 2684.9 m.
- 003-Q returned best results of 200 m of 0.49 g/t Au, 0.09% Cu, 0.007% Mo.



# Alto Ruri Project: Strip log of the 2 best holes re-assayed by Forte Minerals

## DDH-01



## DDH-08

(Exact collar location unknown)

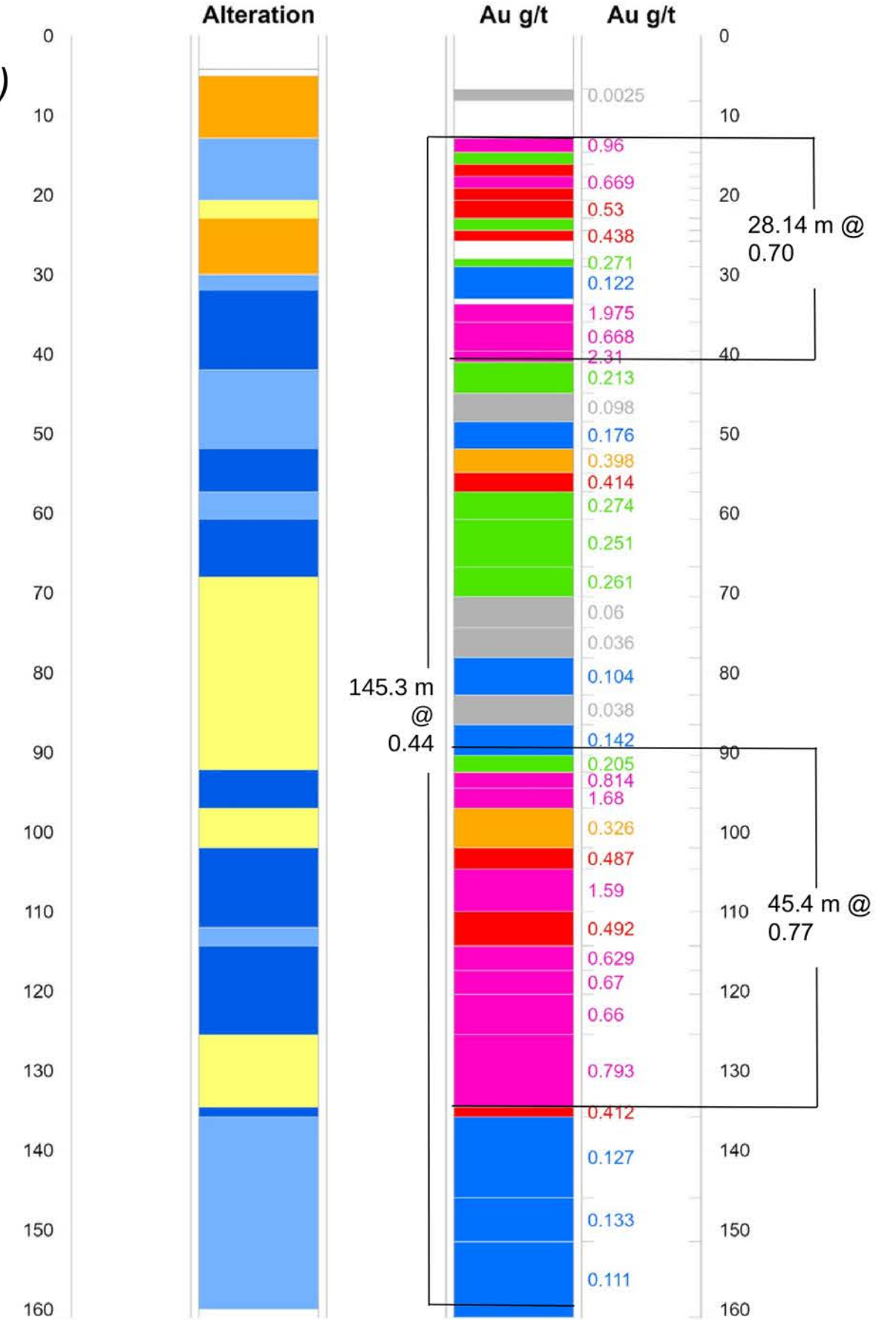
### Legend

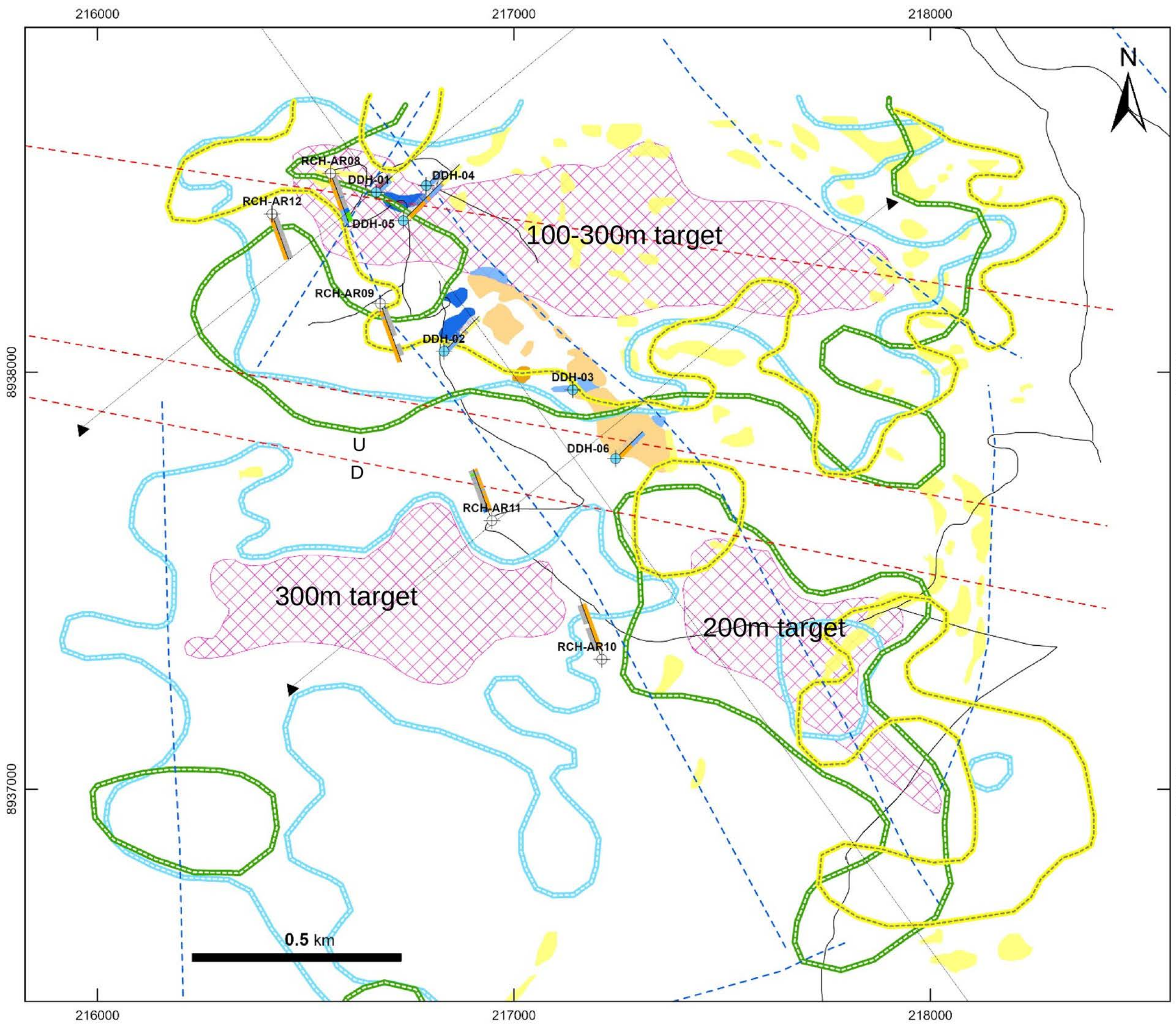
#### Alteration

- None
- Qtz (Vuggy)
- Qtz + Kao + Cly
- Kao + Cly
- Cly

#### Au g/t

- < 0.1
- 0.1 - 0.2
- 0.2 - 0.3
- 0.3 - 0.4
- 0.4 - 0.6
- > 0.6





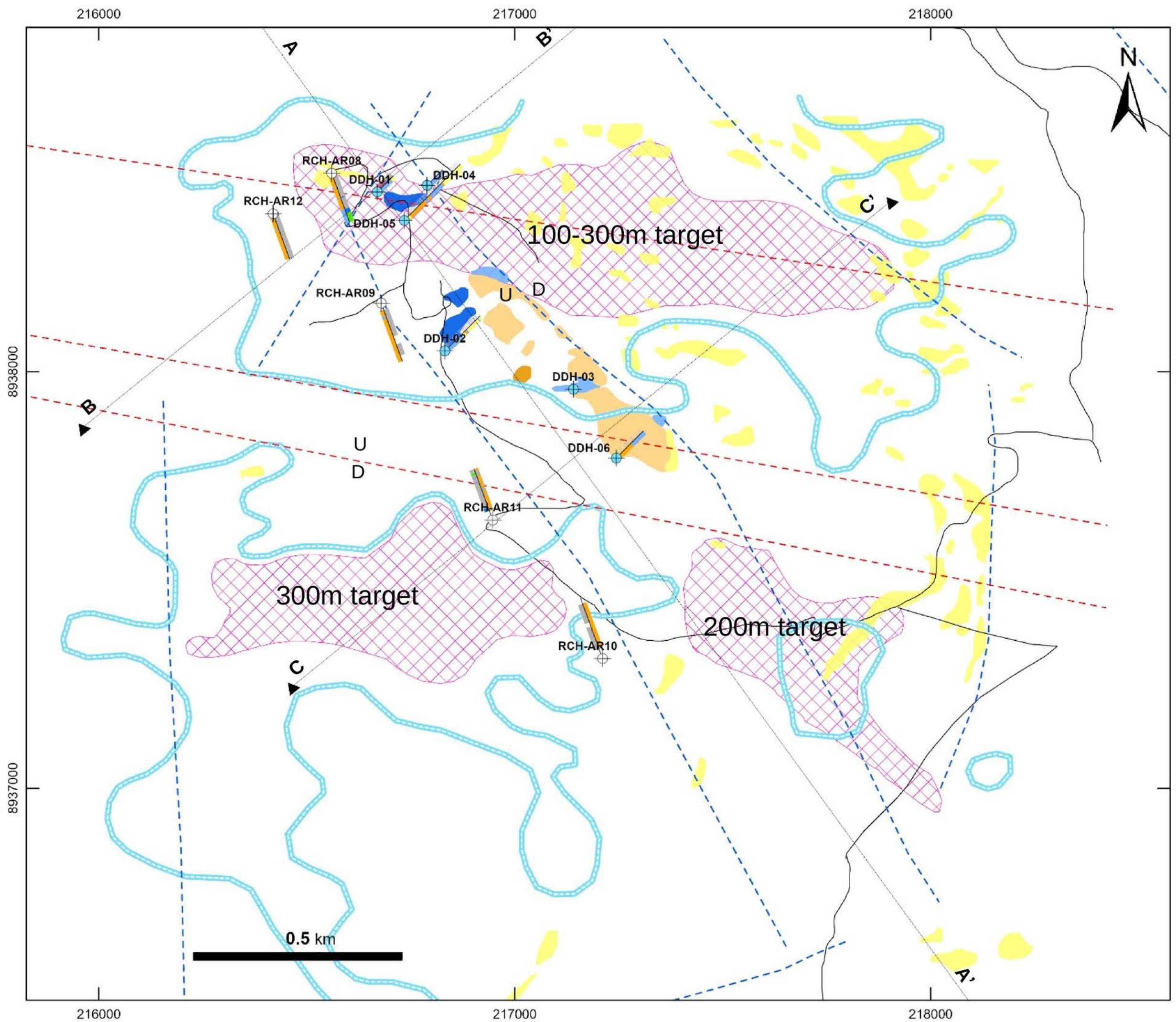
# Alto Ruri Plan View

## CSAMT Resistivity Outline (-300m)

### Legend

- Advanced Argillic Mineralized Target
- Vuggy Silica
- Massive Silica
- Quartz-Alunite-Kaolinite
- Quartz-Kaolinite-(Sericite?)
- Argillic
- CSAMT Resistivity Outline Zone (-100m)
- CSAMT Resistivity Outline Zone (-200m)
- CSAMT Resistivity Outline Zone (-300m)
- 1996 BV DDH
- 1996 BV RC
- Interpreted Structure
- Structure
- Section Point
- Section Line
- Unpaved Road





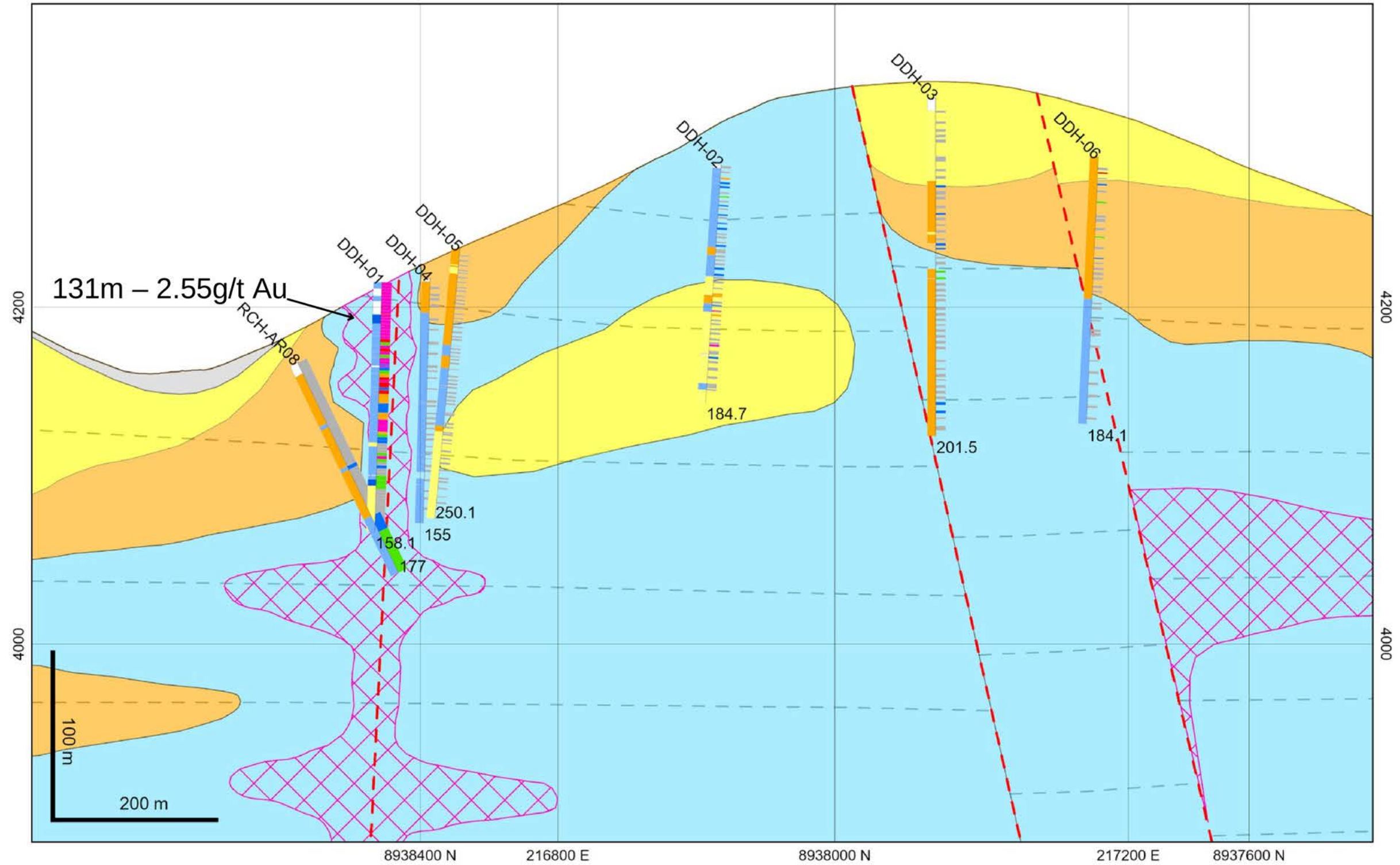
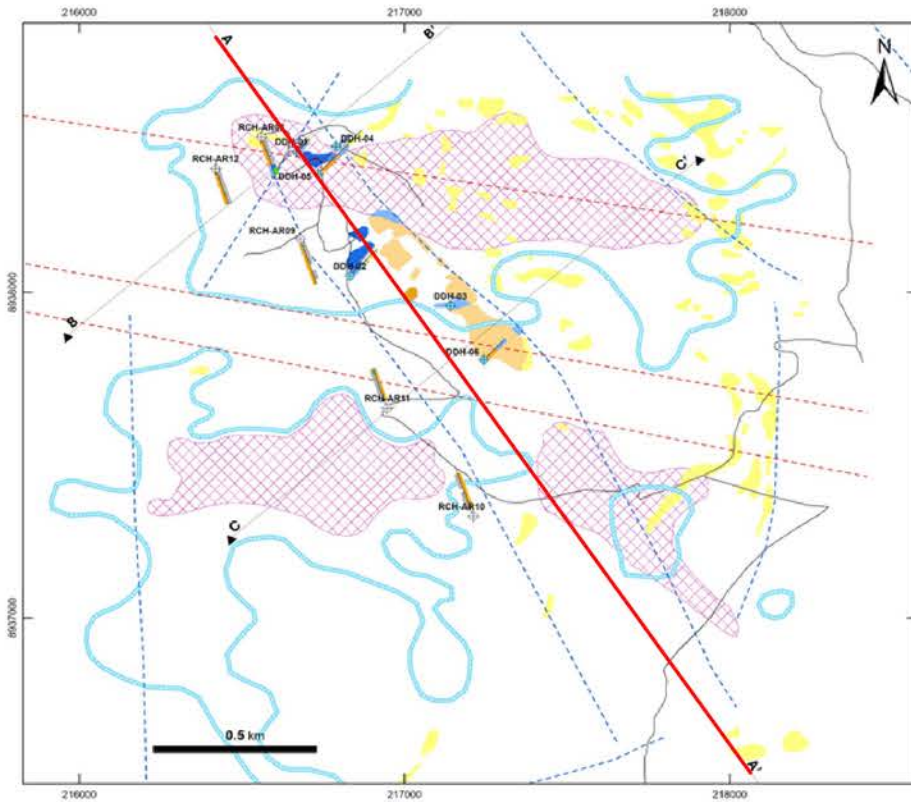
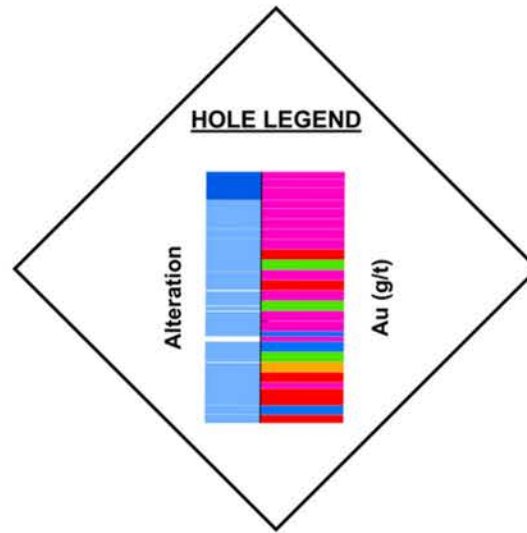
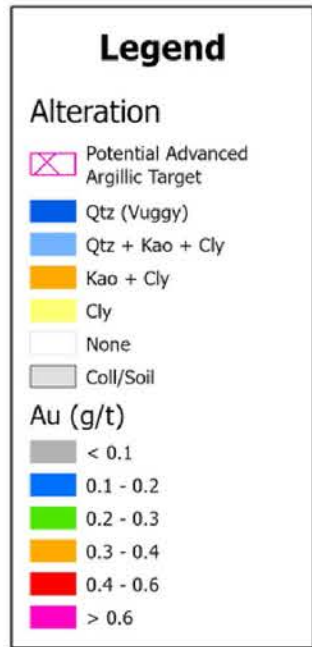
# Alto Ruri Plan View

## CSAMT Resistivity Outline (-300m)



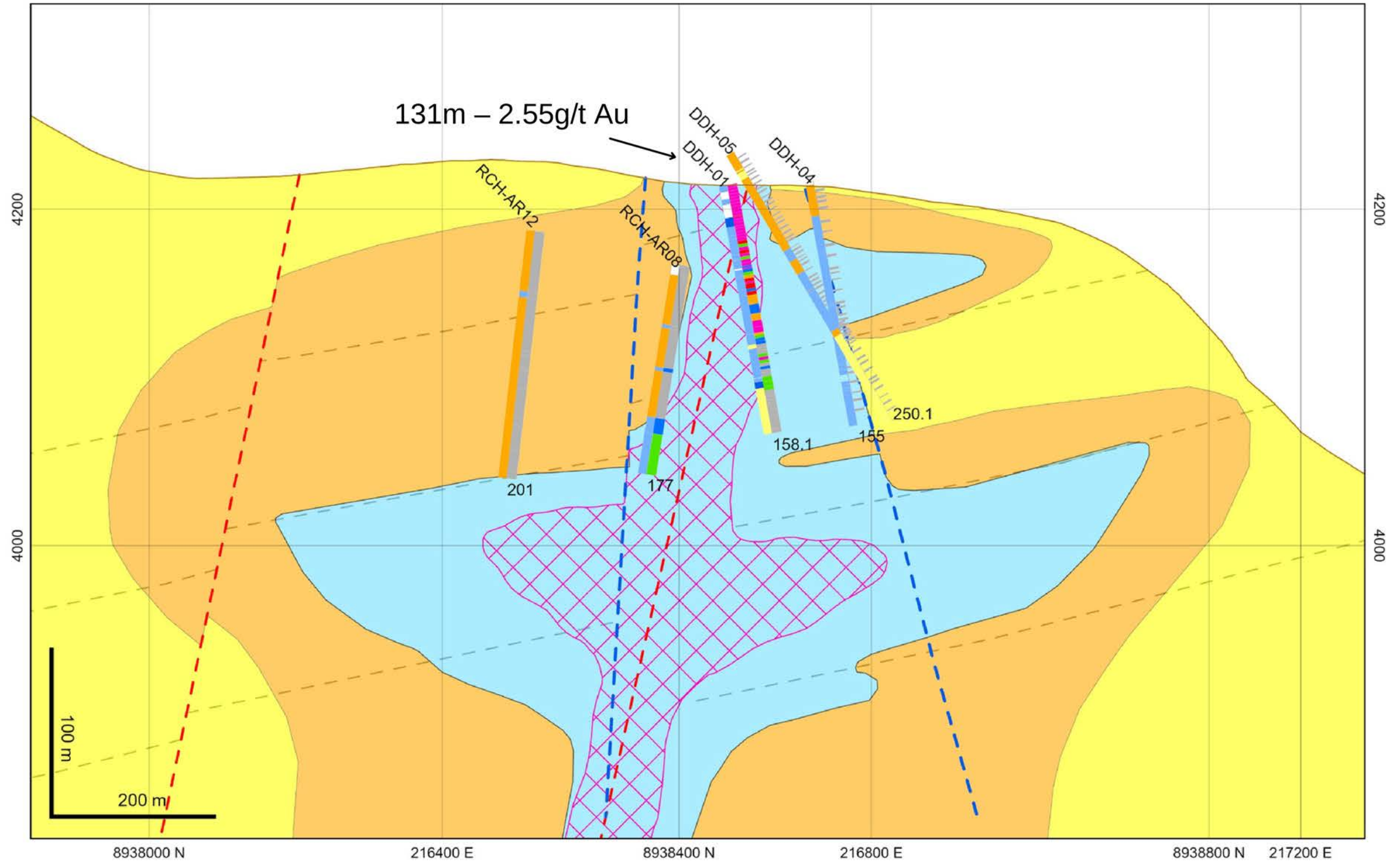
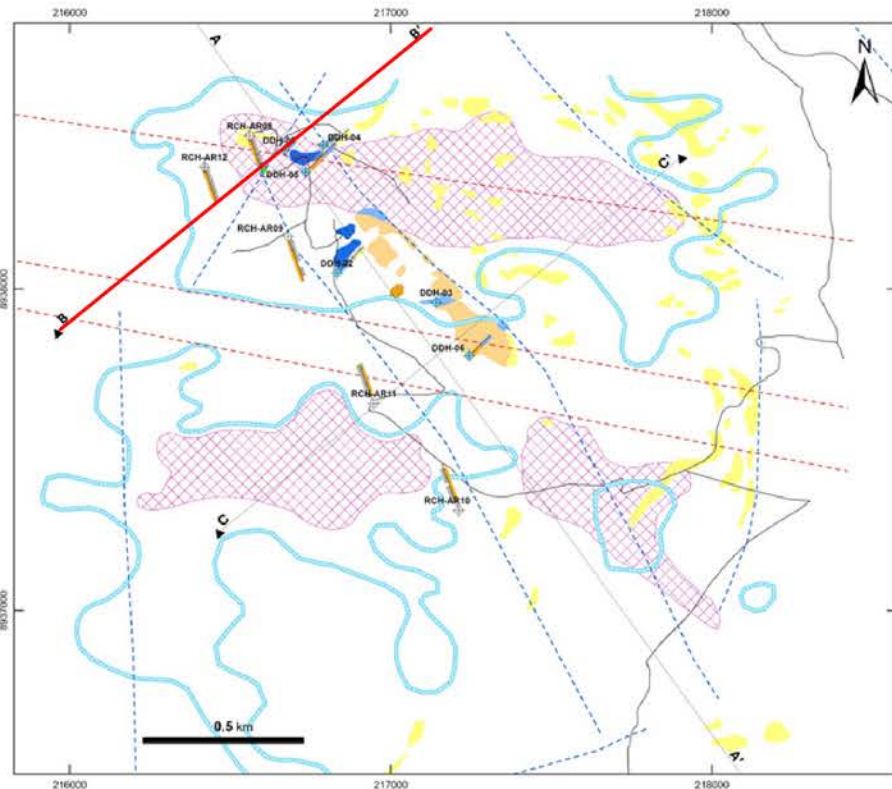
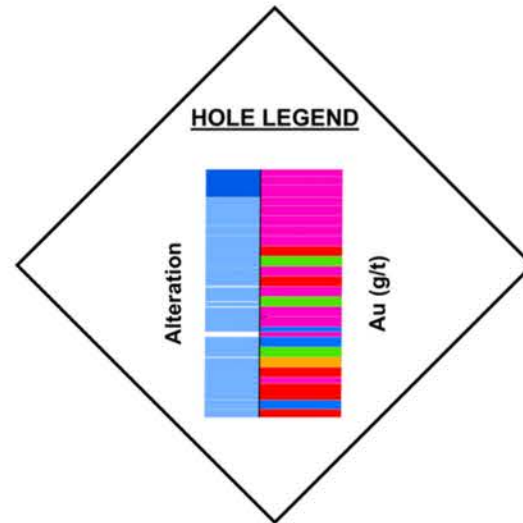
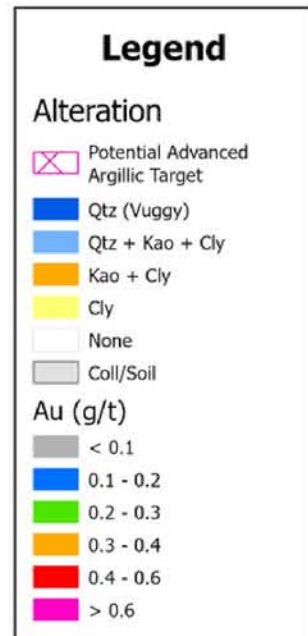
# Alto Ruri

## Section A – A' (Looking NE)



# Alto Ruri

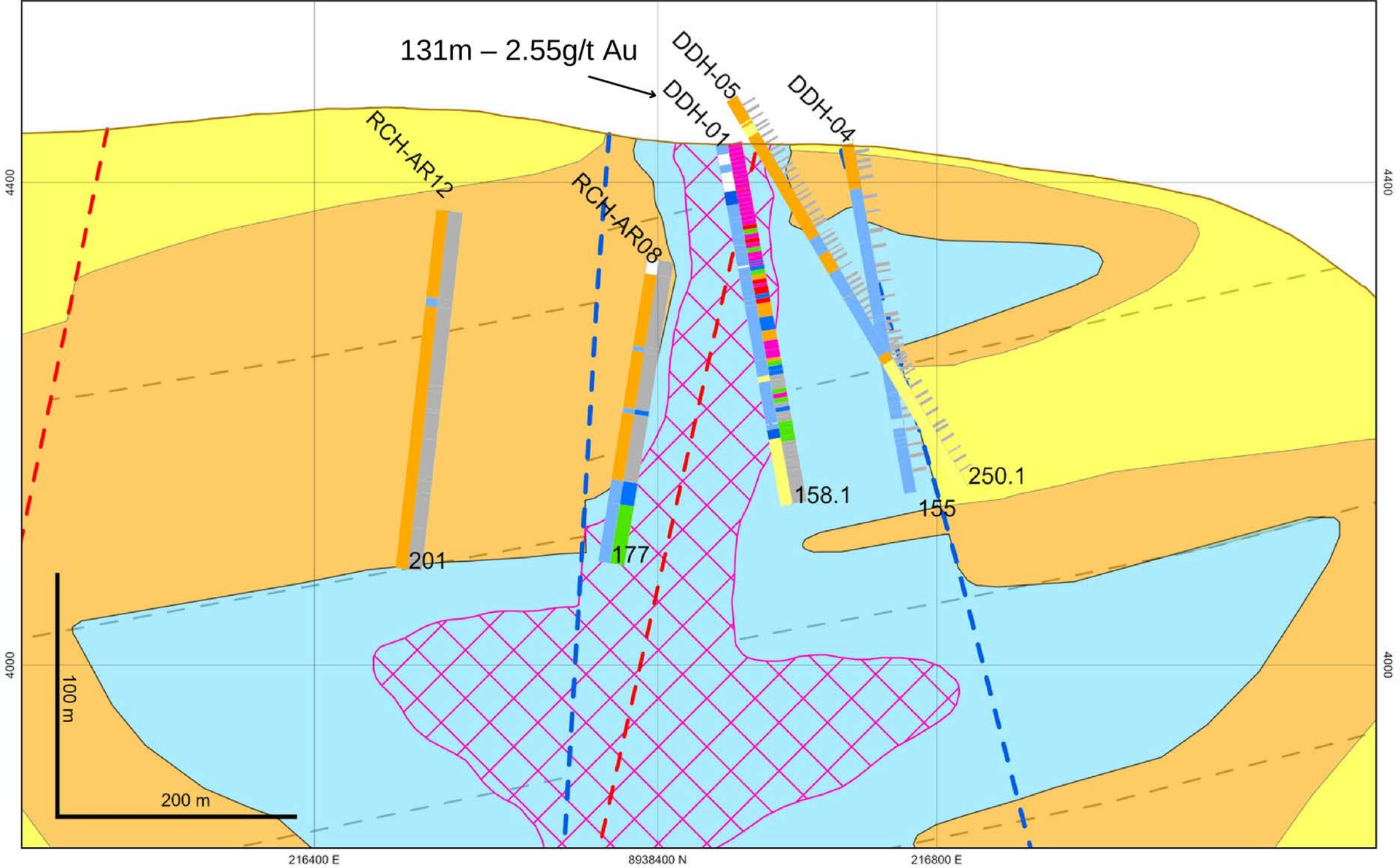
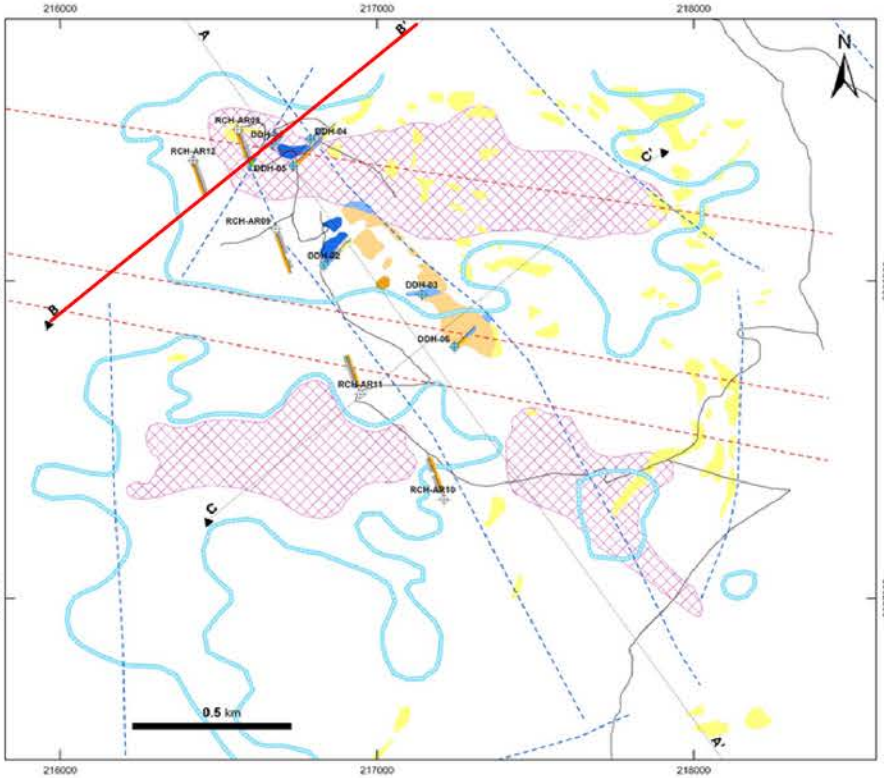
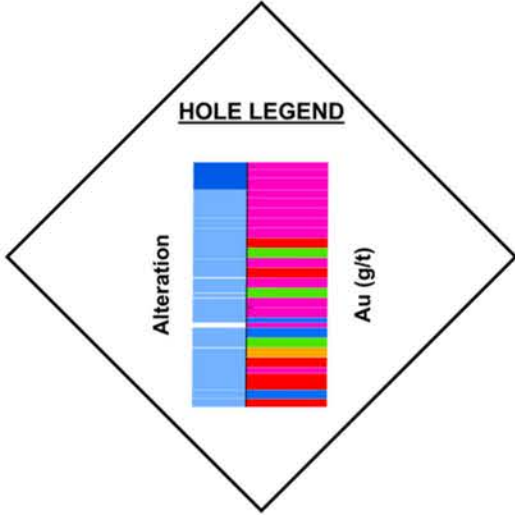
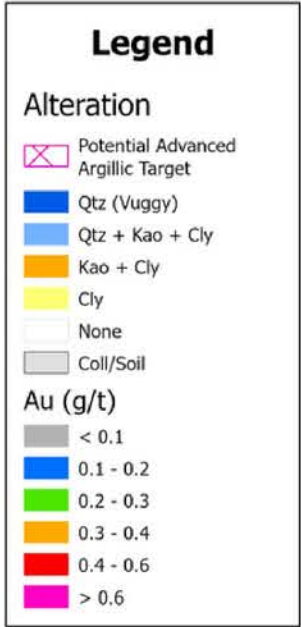
## Section B – B' (Looking NW)





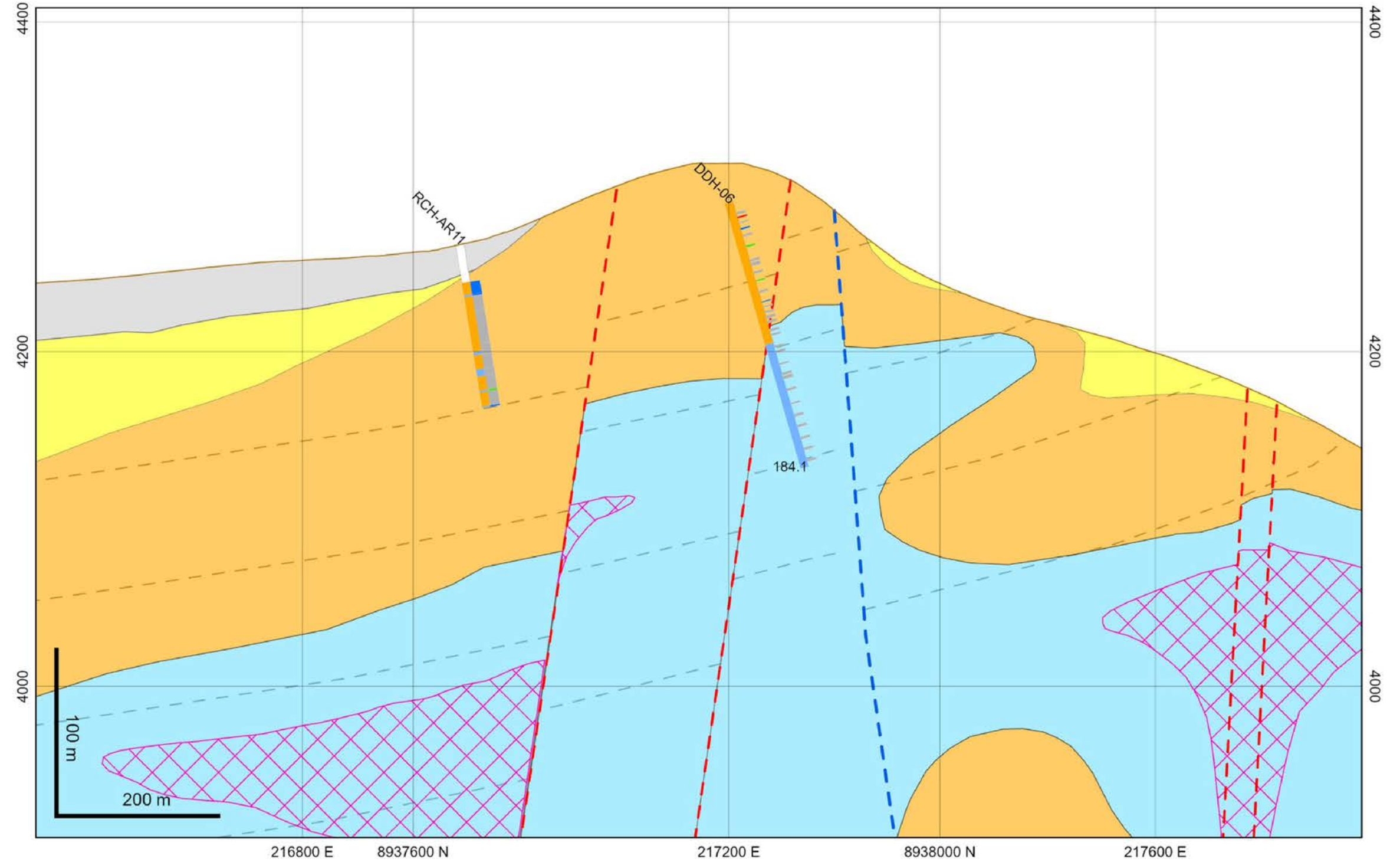
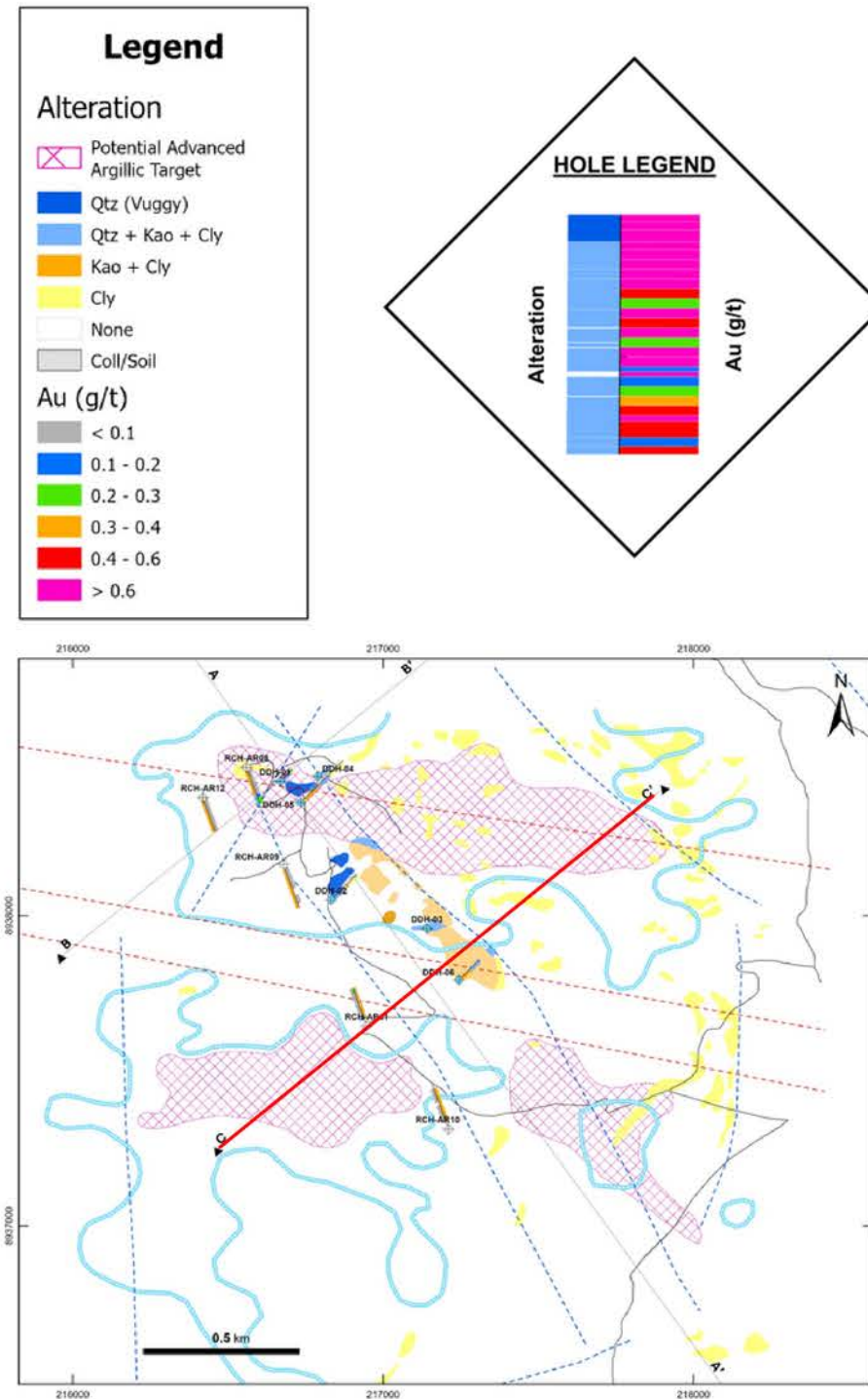
# Alto Ruri

## Section B – B' (Looking NW) Zoom In



# Alto Ruri

## Section C – C' (Looking NW)



# Alto Ruri - Epithermal High Sulphidation Au Project Cerro Quillo - Porphyry Au-Cu-Mo Projects



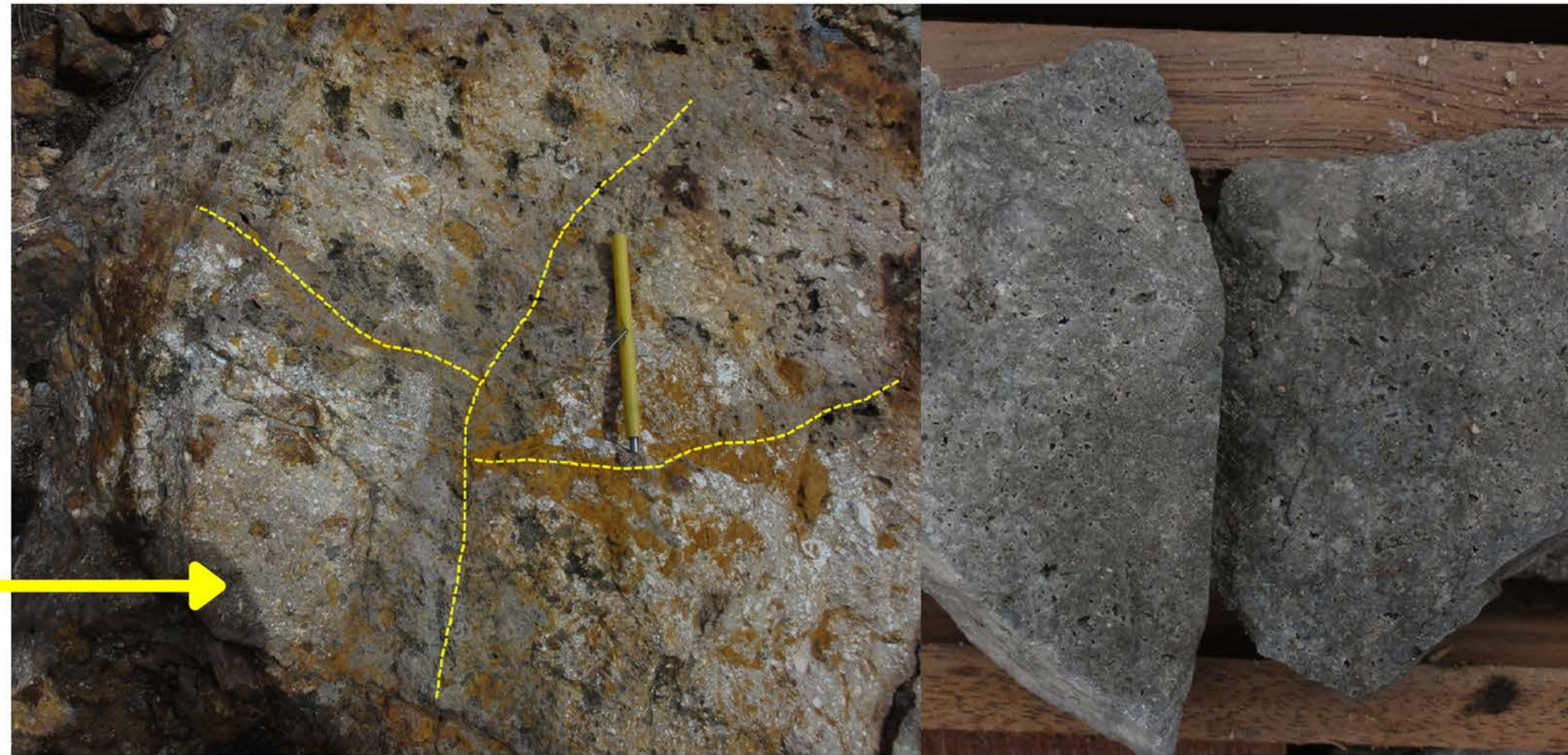
Panoramic view of the Alto Ruri Project looking North



# Alto Ruri Project

## Vuggy Silica + Gold Replacement

Silica Flooding carrying high grade gold along fractures



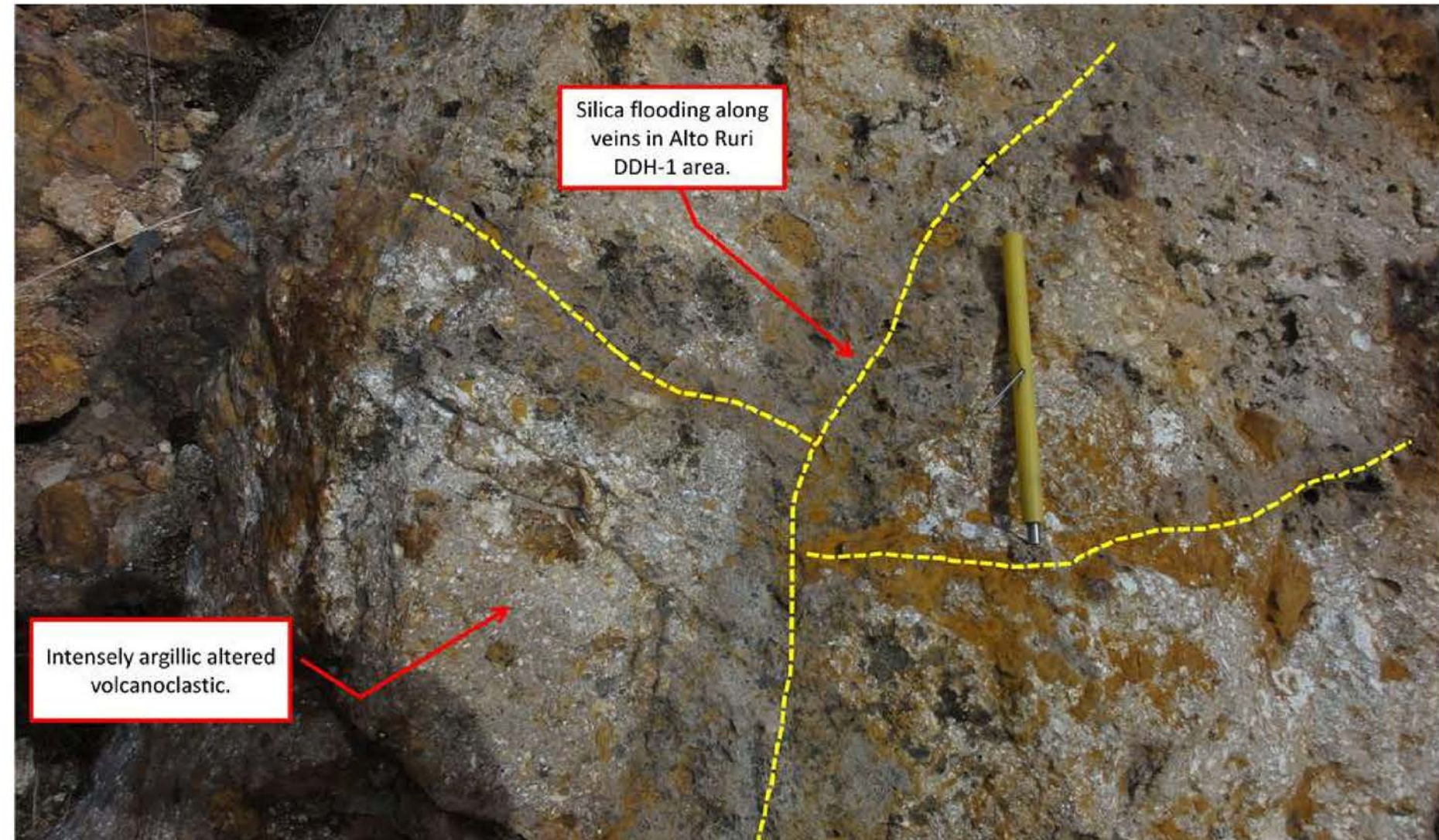
Vuggy silica replacement in advanced argillic altered volcanoclastic rock from drill hole 001-97.



# Advanced Argillic and Vuggy Silica Alteration in Volcaniclastic Sandstones



# Advanced Argillic and Vuggy Silica Alteration in Volcaniclastic Sandstones





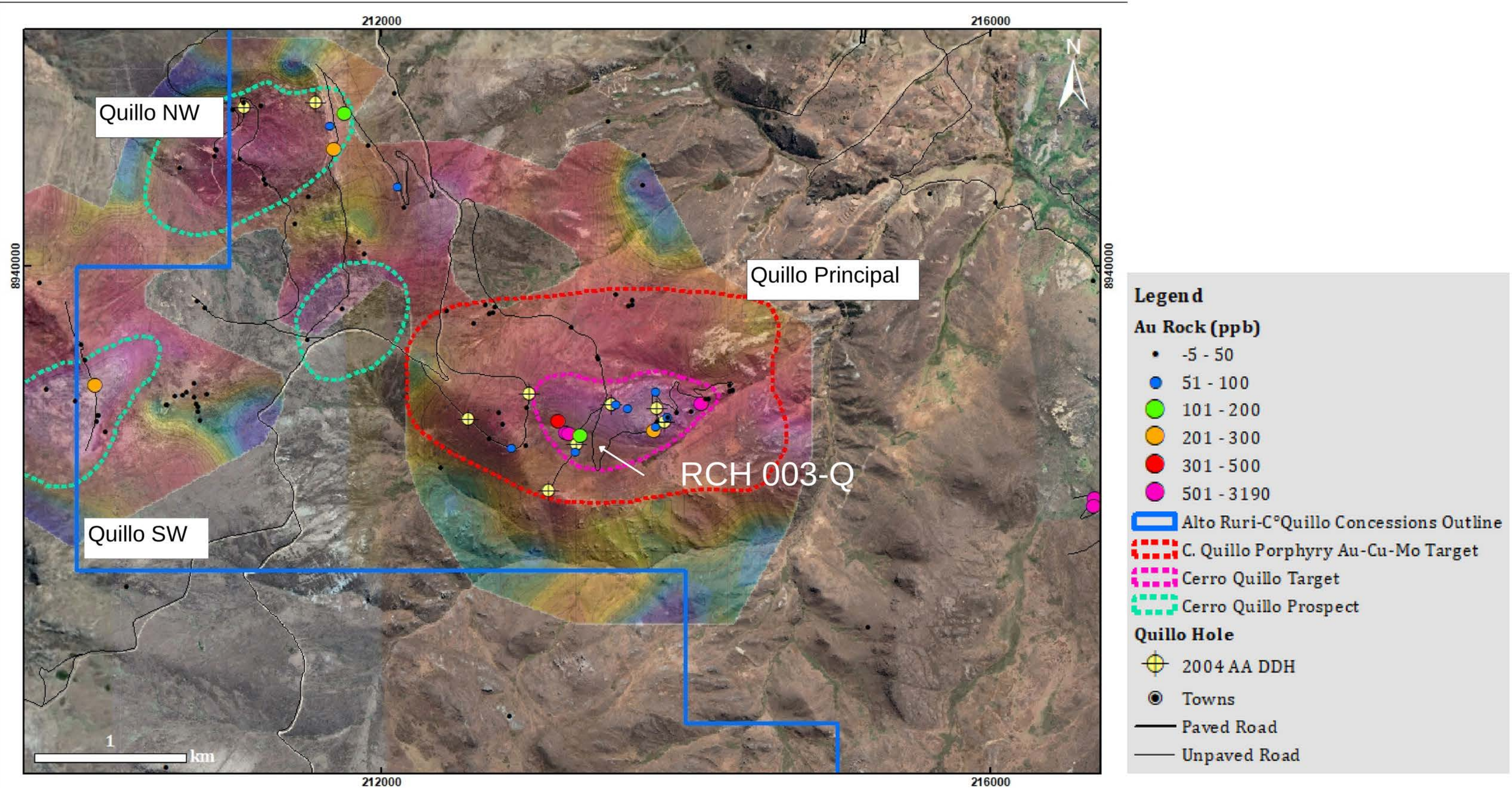
**FORTE**  
MINERALS CORP.

CSE: CUAU | OTCQB: FOMNF | Frankfurt: 20A

# Cerro Quillo Project

## Porphyry Au-Cu-Mo

# Cerro Quillo Regional IP Chargeability (200m)- Au Geochemistry

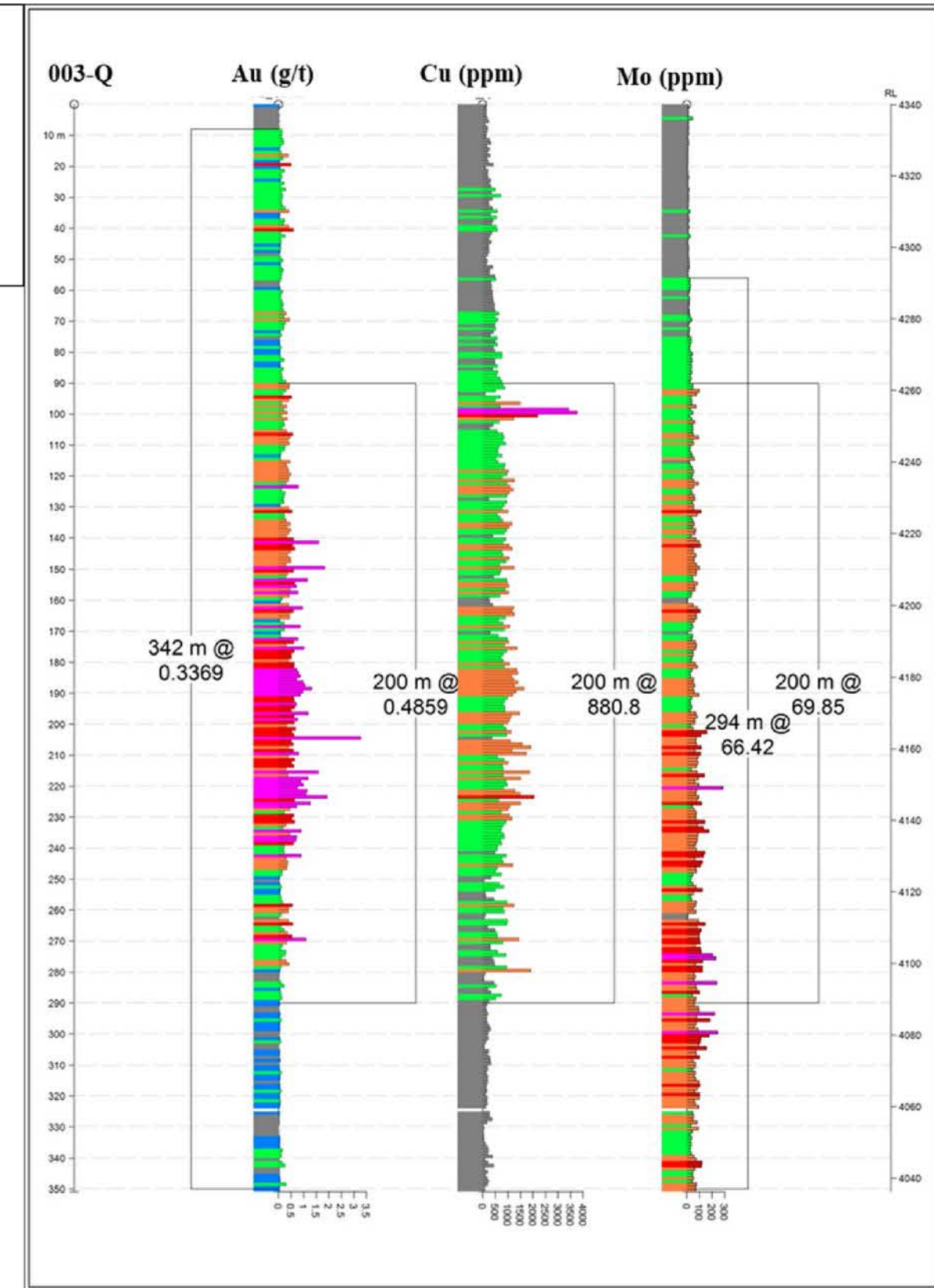
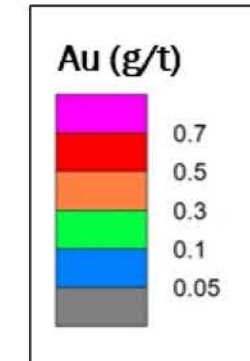
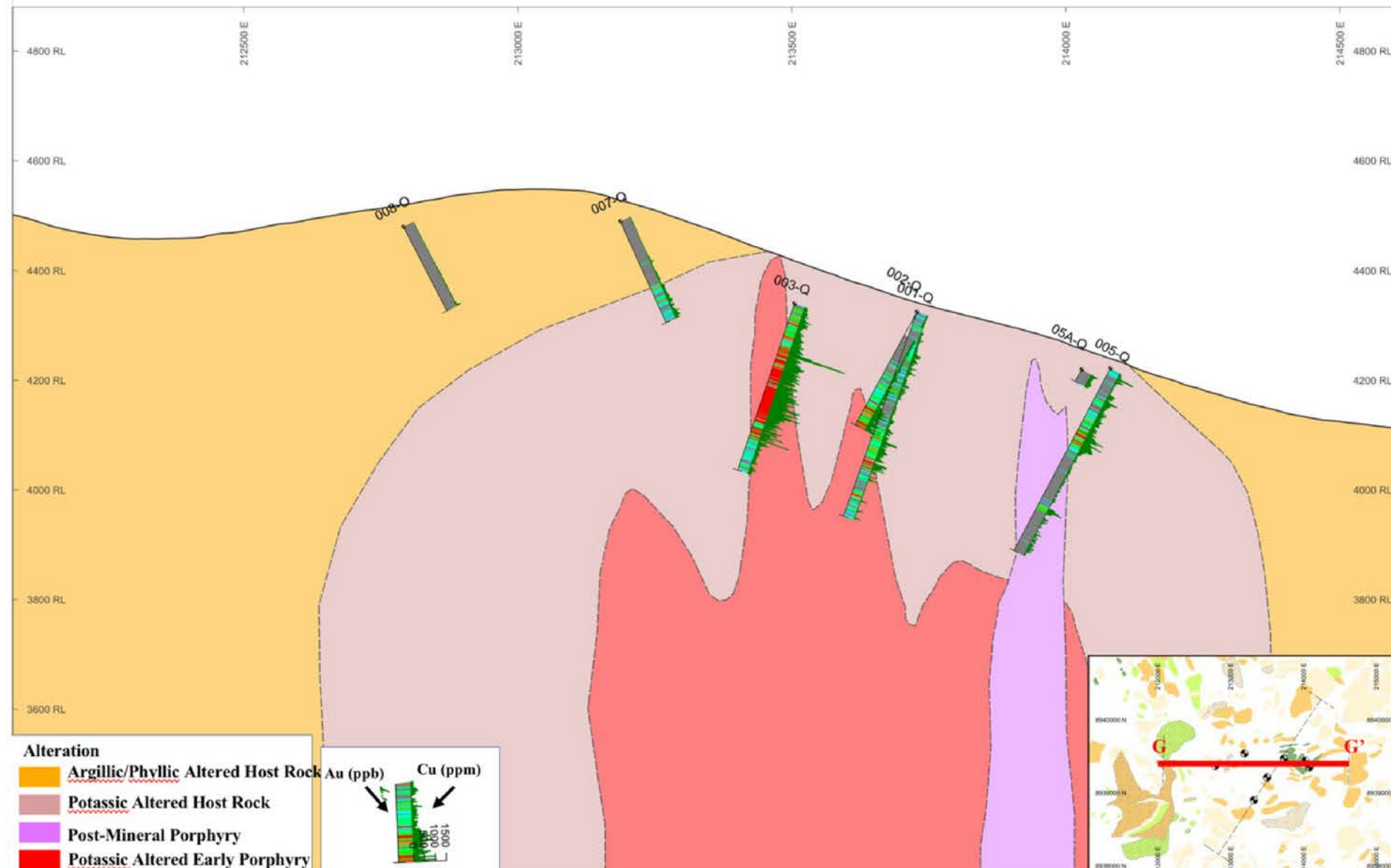




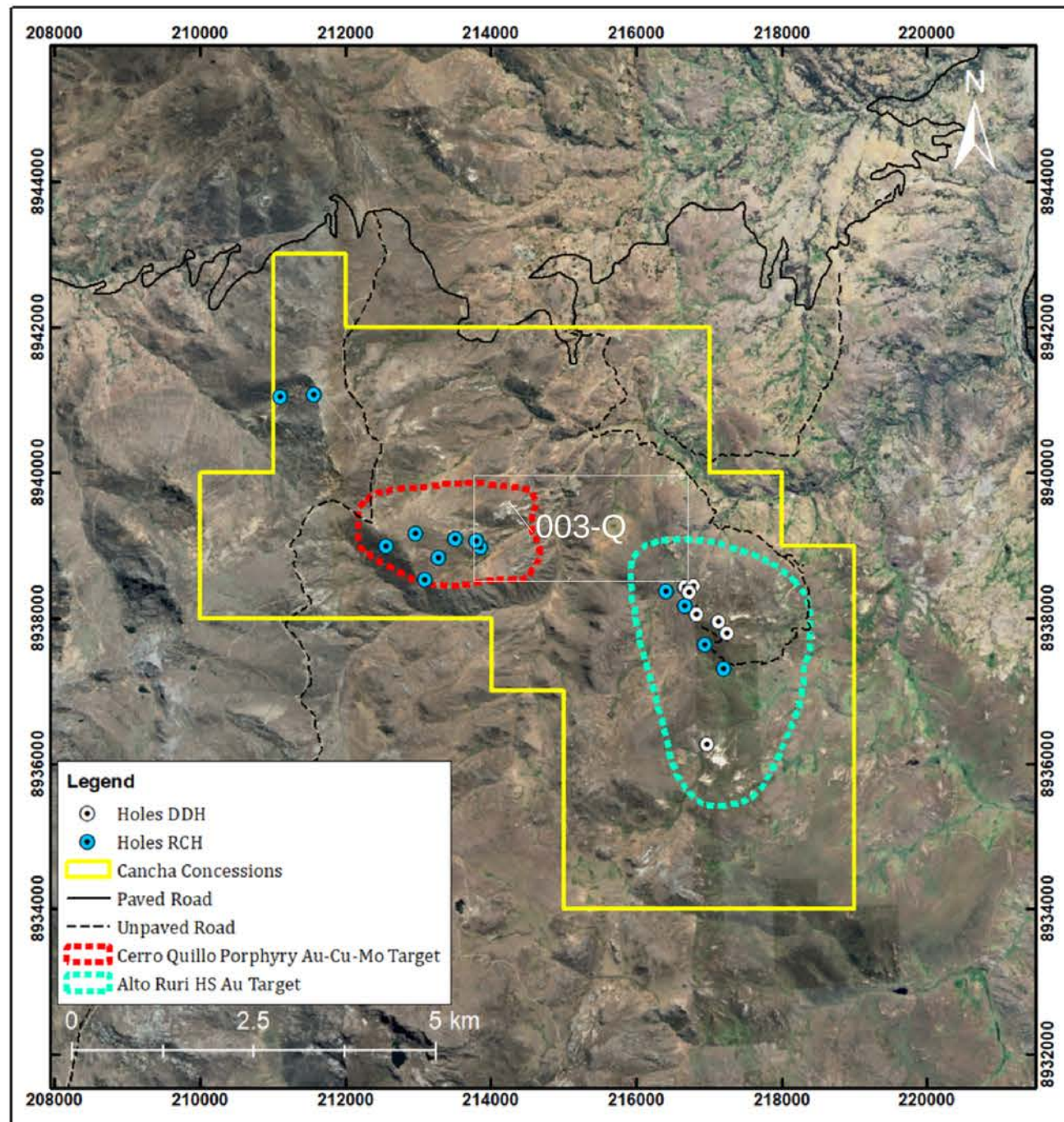
# Cerro Quillo Porphyry Au-Cu-Mo Project

## Strip Log RCH 003-Q

Cerro Quillo – Geological Model  
Section G-G'. Looking N



# Cerro Quillo Porphyry Au-Cu-Mo Project Potassic Alteration



Potassic altered volcanoclastic rock with A-veins overprinted with phyllic alteration.



# Cerro Quillo Alteration and Veining



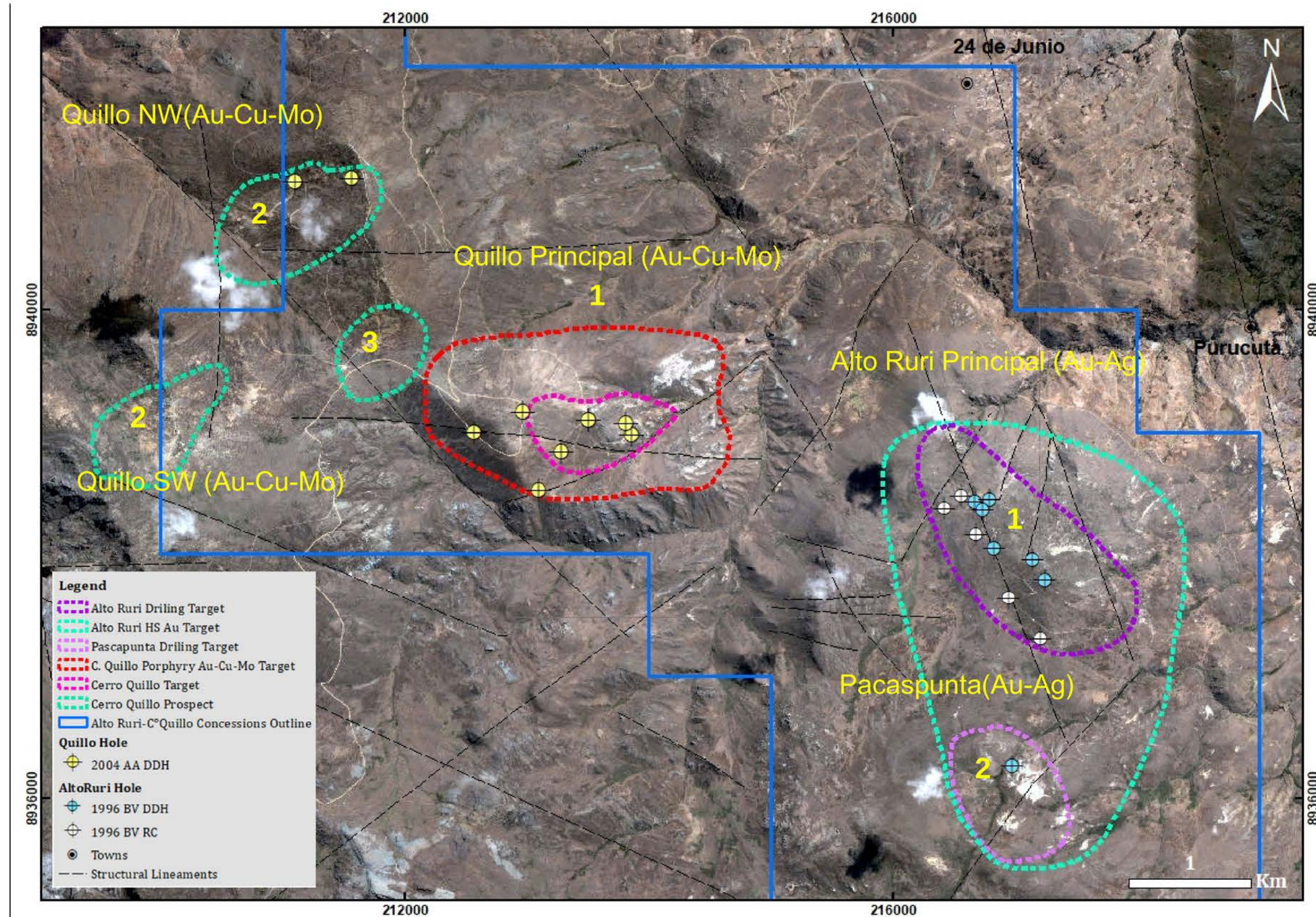
Type B-vein with disseminated molybdenite crosscutting a dacite pyroclastic tuff.



Stockwork type A-Veins overprinting phyllic alteration.



# Alto Ruri – Cerro Quillo Geochemical and Geophysical Targets





**FORTE**  
MINERALS CORP.

CSE: CUAU | OTCQB: FOMNF | Frankfurt: 20A

# Contact Information



1005-409 West Granville St.  
Vancouver BC V6C 1T2  
T: (604) 983-8847  
E: [info@forteminerals.com](mailto:info@forteminerals.com)  
W: [forteminerals.com](http://forteminerals.com)

Legal Counsel  
Armstrong Simpson

Auditors  
Smythe LLP

Transfer Agent  
Odyssey Trust Co.



[www.forteminerals.com](http://www.forteminerals.com)

